



GASPARDO

MAGAZINE

AGRITECHNICA 2019 Edition



CHRONO 306



TEMPO ULTRA



EXTREME 286



VELOCE

Technology

&

Design



BISONTE



PRIMO EW



TORO



ARTIGLIO

WELCOME TO AGRITECHNICA 2019



Dear Customer,

It is a pleasure to welcome you at the **MASCHIO GASPARDO** booth of AGRITECHNICA 2019. Thanks to our new technical developments, we set ourselves the goal of offering a full range of innovative products targeted to satisfy our global customers' needs for the optimization of their productivity and efficiency during the day-to-day operations. We are proud to be here again at the most important international exhibition, keeping innovation at the top.

Mirco MASCHIO

Chairman

MASCHIO GASPARDO S.p.A.

Our job is to work alongside the farmer, looking for the best solutions for an innovative, effective and sustainable agriculture. All these features are in the DNA of CHRONO, the new high-speed planting technology of **MASCHIO GASPARDO**, present at AGRITECHNICA 2019. This important appointment allows our team to meet end-users and dealers; sharing ideas helps us to develop new technological innovations for the enhancement of our customers' performance. This is an extraordinary opportunity.



Andrea MASCHIO

Chairman

MASCHIO Holding S.p.A.



MASCHIO GASPARDO is one of the most well-known and respected brands in the global agricultural industry since 1964, and we are proud to be part of this company. We at **MASCHIO GASPARDO** are committed in focusing our efforts to find sustainable solutions for agriculture; two key points in mind: reliable products and proactive support to our customers.

Luigi De Puppi

CEO

MASCHIO GASPARDO S.p.A.





CONTENTS

Welcome!	02	Our numbers	12	EXTREME 286	18
A history of Excellence About us...	04 05	NEWS	13	VELOCE - ARTIGLIO	19
Customers are our priority	06	CHRONO	14	TORO - BISONTE	20
Innovation and Technology	08	PRIMO ISOBUS	16	DAMA PLUS - UNICO L	22
Sustainability	10	TEMPO ULTRA	17	Agriculture 4.0	23

A HISTORY OF EXCELLENCE



The founders, **Giorgio and Egidio Maschio**

The business started in 1964...

...when the brothers Egidio and Giorgio Maschio started the production of rotary tillers in the barn of their house. A few years later the small-scale production turned into a major international company.



ABOUT US...WHAT WE BELIEVE IN

“To be a global leading provider of sustainable agricultural solutions.”



We are a team made up of by 2.100 men and women, brought together by dedication and passion for agriculture...



...in order to give our customer a professional and quality service.



The customer satisfaction is our priority!

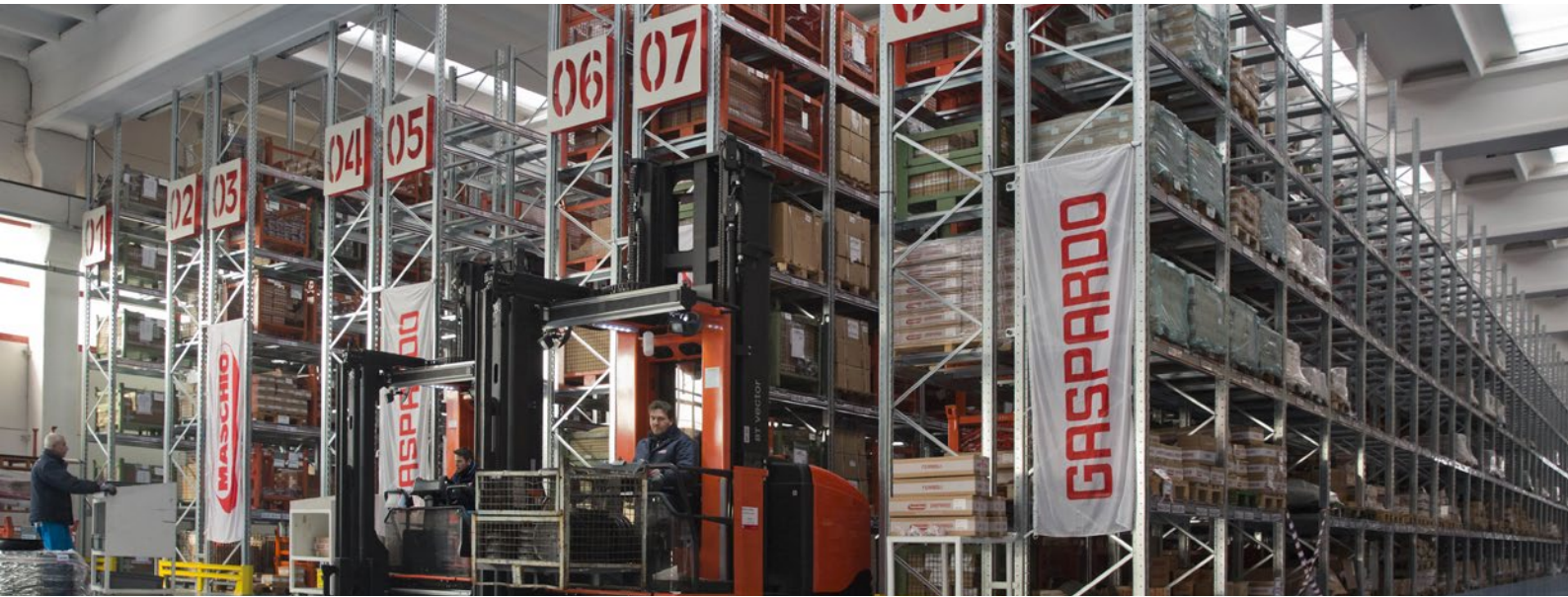
CUSTOMERS...



MASCHIO GASPARDO ACADEMY is the training center where the Group grows the passion for technical and commercial knowledge of agricultural machinery, both for the employees and the dealers.



...ARE OUR PRIORITY



Farmers and contractors know how tight is the farming calendar. It is essential to receive spare parts as soon as possible.



To meet the needs of its customers, MASCHIO GASPARDO set up a new centralized warehouse, located in the Campodarsego headquarters in Italy.

- Centralised warehouse
- 24-hour delivery for urgent orders
- Worldwide distribution

80.000 articles managed

The MASCHIO GASPARDO team guarantees **the best after-sales service.**

For us the customer service is an ATTITUDE not a department; a top priority to meet the demands of those who choose our products every day.



INNOVATION AND TECHNOLOGY

Always at the forefront

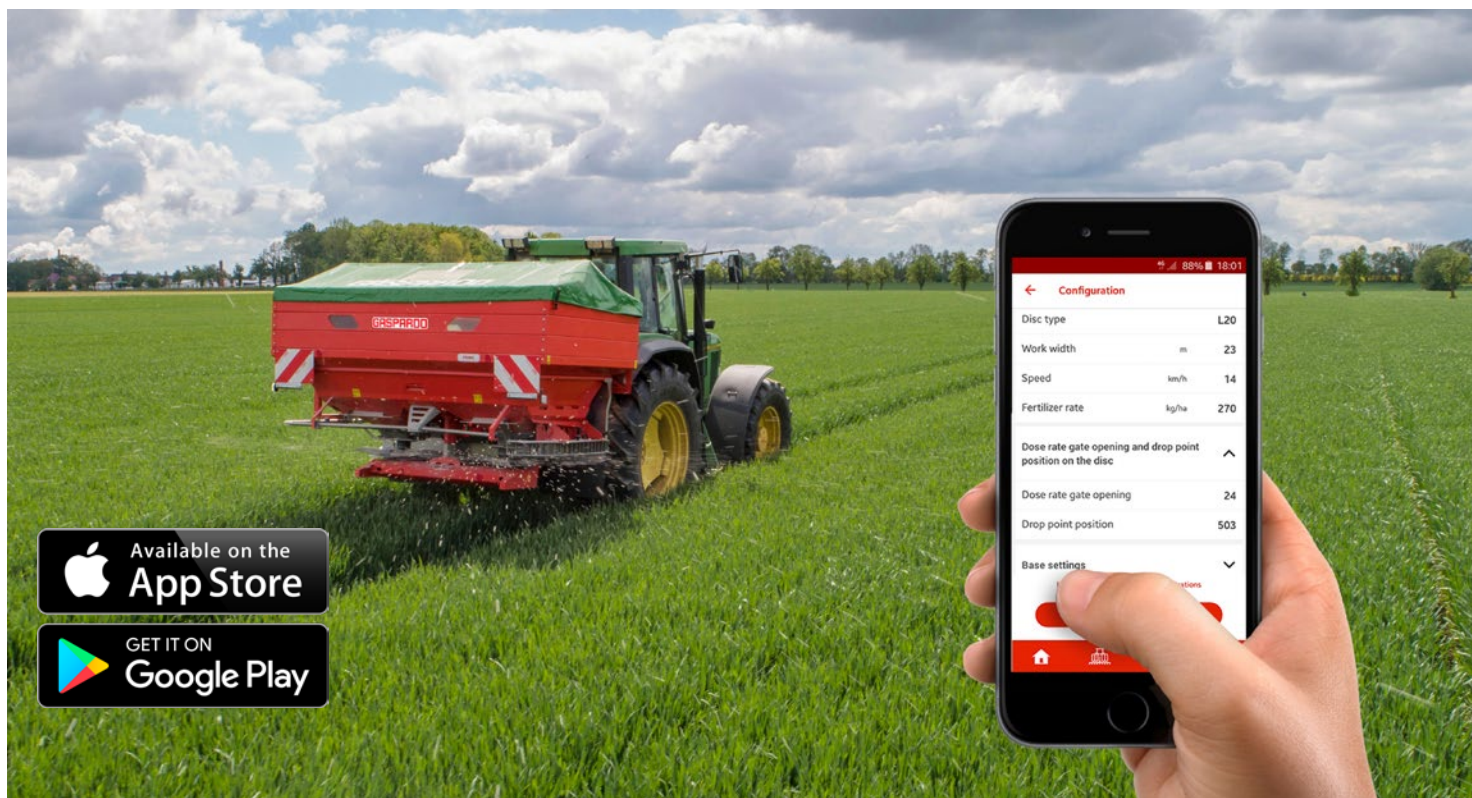
All parameters under control

MASCHIO GASPARDO provides different ISOBUS TERMINALS to easily control the parameters during the work.



Official App **My MASCHIO GASPARDO**

The ideal consultant for the professionals of agriculture and the enthusiasts of MASCHIO GASPARDO world!

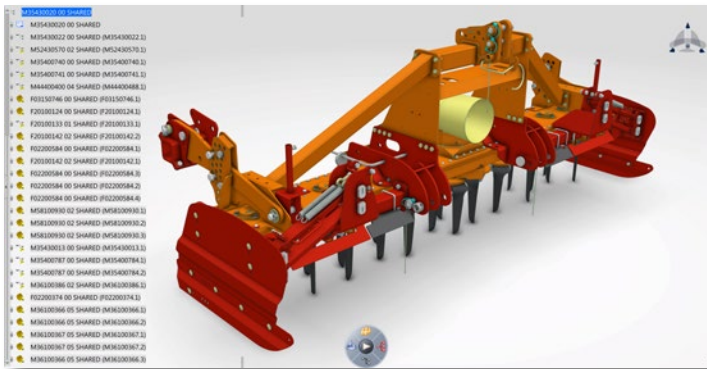


PRIMO EW ISOBUS version

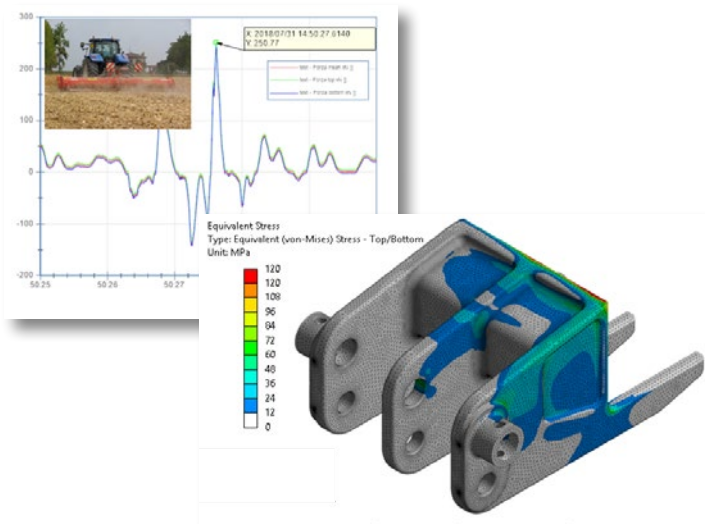
The software has been entirely developed by our engineer software team. It allows the user to regulate all the high precision settings to reach the top quality spreading patterns: variable rate and section control.

TESTS AND SIMULATIONS

Constant improvement



The elaboration of a new machine concept in MASCHIO GASPARDO starts from the work of the marketing team in collaboration with the technical office: the agronomic needs of the final customers, the latest developments in the tractor industry and new eco-friendly solutions are analyzed.



The project optimisation and validation is carried out through laboratory testing and stresses simulations through data-processing software: FEM - Finite Element Method or bench tests as examples, these allow testing the machine components and their behaviour through a real simulation at work.

FIELD TEST

The delicate design phase for our technicians is accompanied by the creation of a reliable prototype. At this stage numerous field tests are carried out in different soil conditions to optimize the performances.



SUSTAINABILITY

3,500,000

kWh per year
of energy produced

1,700

tons per year
of CO₂ emissions avoided

which corresponds to
the amount of CO₂
absorbed by

150,000

trees



...We take care of the environment



We take care of the soil

The ISOTRONIC electrical transmission optimizes cultivation inputs, applying the principles of mapping and variable rate density (precision farming) according to the different production potential that characterizes the often-heterogeneous soils. Moreover, the combined machines allow multiple operations simultaneously, with a remarkable reduction of fuel and CO2 emissions in the air.



Certification

First company in the world producing agricultural machinery.

First engineering industry in Italy.

Life Agricare project

In 2014 the Group subscribed to the LIFE AGRICARE project, showing that modern mechanical and electronic machinery for precision farming allow a significant reduction of greenhouse gas and a greater soil protection.



AGRICARE
Innovative Green Farming



OUR NUMBERS

8

PRODUCTION PLANTS

The MASCHIO GASPARDO Group has 8 production plants, 5 in Italy and the rest in Romania, China, India.



MASCHIO GASPARDO has 13 commercial branches all over the world.

13

SALES BRANCHES

72.000

machines sold in 2018

MASCHIO GASPARDO is a group leading company in the production of machines for tillage, green maintenance, passive soil cultivation, seeding & planting, fertilization, crop protection and hay making.

NEW FOR AGRITECHNICA 2019

In the following pages you can find all the great new developments that **MASCHIO GASPARDO** is presenting at **AGRITECHNICA 2019!**



PRIMO EW ISOTRONIC



CHRONO 306



TEMPO ULTRA



EXTREME 286

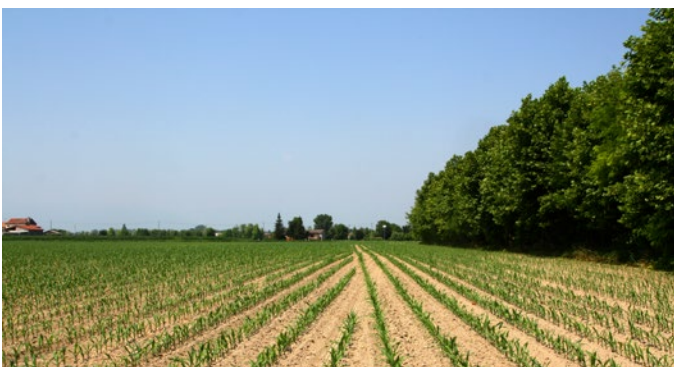
...and that's not all...

CHRONO

High speed precision planters



In 2019, MASCHIO GASPARDO has launched two new high-speed precision planters: CHRONO 306 and CHRONO 708. Both are equipped with an electrical transmission and an exclusive pressurized seed delivery system, enabling them to operate at 15 km/h, and more with maximum accuracy.



CHRONO excels in a wide range of conditions: from conventional to minimum tillage and even no-till.

It always ensures an accurate seed placement regardless its size.

The ISOTRONIC system permits an easy connection to every ISOBUS tractor for digital section control.

CHRONO



The CHRONO planting unit was born from the collaboration between our R&D Department and Scuola Italiana di Design (SID).

DESIGN BY



Design is increasingly important in MASCHIO GASPARDO products! Functional aspects, ergonomics, materials and style impact on the product development process, also to enhance the brand awareness.



PRIMO EW ISOTRONIC

Spreader

The technological evolution in the field of fertilization has led to the development of the fertilizer spreader range entirely built by MASCHIO GASPARDO



PRIMO EW ISOTRONIC with electronic adjustments and setting

The core of the machine is the distribution system, consisting of a roto-vibrating head that conveys the fertilizer to the point of fall without damaging the fertilizer.

The distributed quantity is controlled by a double shutter system: the first shutter adjusts the dose, the ON/OFF instantaneously activate and stop fertilizer delivery at every head-lands turn, it drastically reduces overlapping or under distribution rates.

The fall hole has a particular three-lobed shape for a homogeneous distribution. It is possible to anticipate or postpone the drop point with consequent variation of the spreading width.

PRIMO EW ISOTRONIC is equipped with an electronic weighing system that allows to control the amount of fertilizer into the hopper in real time and, if necessary, to correct the dose of fertilizer per unit area.

TEMPO ULTRA

Mounted sprayer

Advanced intelligent technology

TEMPO ULTRA is the new mounted sprayer entirely designed and built in GASPARDO plant.

A compact and easy-to-use machine with great autonomy but compact dimensions, suitable for medium-large farms thanks to its 1,300, 1,600 or 2,000 l tank . It can be equipped with distribution spraying booms of 21, 24 and 27 meters.

The ALA 400 bar is completely hydraulic, with automatic levelling pendulum locking function and the possibility of manual levelling with variable geometries.

The wings closing sequence is performed simultaneously: first by closing laterally the various bar sections starting from the tip, then leading the bar vertically into transport position, and finally lowering the lift to hook the wings in safety.



Moreover, TEMPO ULTRA offers the possibility of variable rate, for optimal crop protection. The distance of the bar from the ground or from the crop is maintained constant thanks to a sonar control system that keeps continuously the bar parallel to the ground, even at high speed and on hilly ground. TEMPO ULTRA is also available in ISOBUS version.

EXTREME 286

Hybrid baler

EXTREME 286 is a new HYBRID baler made by MASCHIO GASPARDO, which combines the winning features of fix baler with the new advantage of variable baler. It is a balance between high performance and maximum ease of use.



The baler has been designed to ensure the total freedom of pressure and size: it can be easily managed by the operator using the ICON monitor inside the tractor's cabin, through 10 programs or personalized management, depending on the needs of the farmer.

To satisfy all the business requests of a round baler with quick and easy management, it has been designed a new drop floor, allowing to quickly solve of any obstruction without getting off from the tractor.

EXTREME 286 complies with the Mother Regulation.



EXTREME 286 is available in 4 different versions:

- HTI alternative feeding
- HTR rotor feeder
- HTC rotor with 13-knives rotor feeder
- HTU rotor with 25-knives rotor feeder

VELOCE

Disc harrow

VELOCE 700 is the new MASCHIO GASPARDO disc harrow, ideal for high power tractors (240-360 HP).

The new strong folding frame (semi-mounted or trailed) features two ranks of discs with 510 mm diameter that can cut through the soil up to 10 cm depth.

The ranks distance has been increased to 800 mm to ensure an optimal soil flow, thus allowing VELOCE to work at a speed of 12-15 km/h while perfectly mixing the soil and the residues.

The land worked by the front discs is compacted by the rear roller to ensure the best conditions for an even sowing.



ARTIGLIO

Mounted subsoiler

To meet the expectations of professional farmers, MASCHIO GASPARDO has widened the mounted subsoiler ARTIGLIO family, with a new folding version.

The solid structure makes it suitable for high-powered wheeled or tracked tractors, up to 400 HP, even with high levels of residue.



Hydraulic closing system for a reduced transport width (2,55 m).

ARTIGLIO FOLDING is available with 4 or 5 m of working widths, with 9 or 10 shanks respectively. Thanks to 2 hydraulic cylinders, it can be closed in a few seconds.

It can handle anything

Thanks to an 82 cm clearance height, the 35 mm sturdy shanks can reach a working depth of 55 cm with excellent results, even with high levels of residue.

TORO

Folding power harrow

TORO HD, the folding power harrow, was born to satisfy the needs of the new generations of high power tractors, up to 400 HP, to compete with any of the market's top-end models.

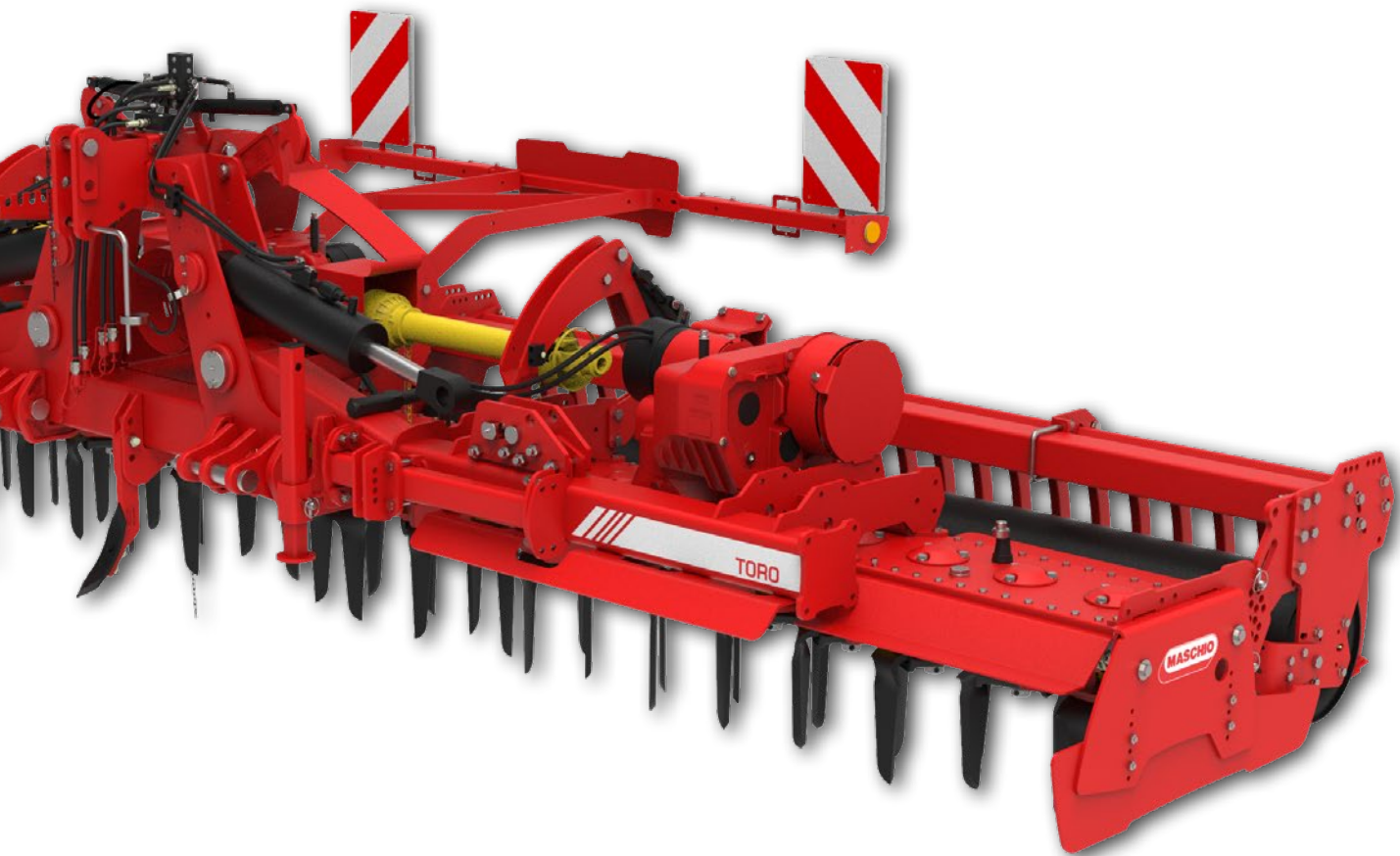
Every single part - from the mechanical components to the barrel bearings, from the gearbox cooling system to the strengthened frame - has been designed to last longer, to result stronger and ensure high performance.

The standard mechanical float permits to follow the morphology of the soil, maintaining uniform the soil already worked.

Better heat treatments and high resistance materials have boosted the overall resistance of TORO without increasing its weight.

The heavy-duty transmission with tempered high-tensile steel shafts, the barrel type bearings and the tempered gears make this machine extreme reliable and suitable for high HP tractors and intensive applications. The increasing safety. Furthermore, the long lasting tines with tungsten carbide coating are up to





The QUICK-FIT tine system allows the user to replace tines quickly, minimizing downtime and 3 times more durable.



BISONTE restyling *Reversible mulcher*

MASCHIO GASPARDO reversible mulchers stand out for their great reliability and versatility, they can be used both front-mounted and rear-mounted with equal efficiency.

These machines, combined with other retro-mounted equipment, allow the management of a greater surface in a unique step, cutting down the working costs and time.

BISONTE restyling, designed for tractors of medium-high power (up to

140 HP), gives its best with shrubs and big residues; thanks to the standard double counter blade, it allows a finer mulching of harder coarse materials.

A new and modern design which implies: a renovated shape, new protection carter of the shaft drive and lateral transmissions, new fixed skids and a more resistant and easy-to-disassemble guard.

DAMA PLUS

Compact combined seed drills



DAMA PLUS is a high performance and very compact combination seed drill.

This machine is suitable for small and medium-sized companies that need lightweight equipment: easy to set up and with low running costs. The metering can be driven mechanically or electrically depending on the business needs. You can combine it with the DRAGO DC, DOMINATOR DM/DMR and ORSO power harrows.

The **ISOTRONIC machine version** features electric dosing transmission: it is a comfortable, easy and prompt solution, which allows the setup of the dose directly from the ISOBUS terminal, in the tractor cab.

UNICO L

In - furrow plough

Versatility, adaptability and endurance: these are the strengths of UNICO L, the in-furrow plough with parallelogram adjustment system.

It is available in different configurations with a number of bodies ranging from 3 to 6, with shear bolt or Hydraulic Non Stop system (NSH) protection and with mechanically or hydraulically adjustable working width.



UNICO L is equipped with a "SMOOTH SET" parallelogram frame, designed to ease and quicken the plough set-up.

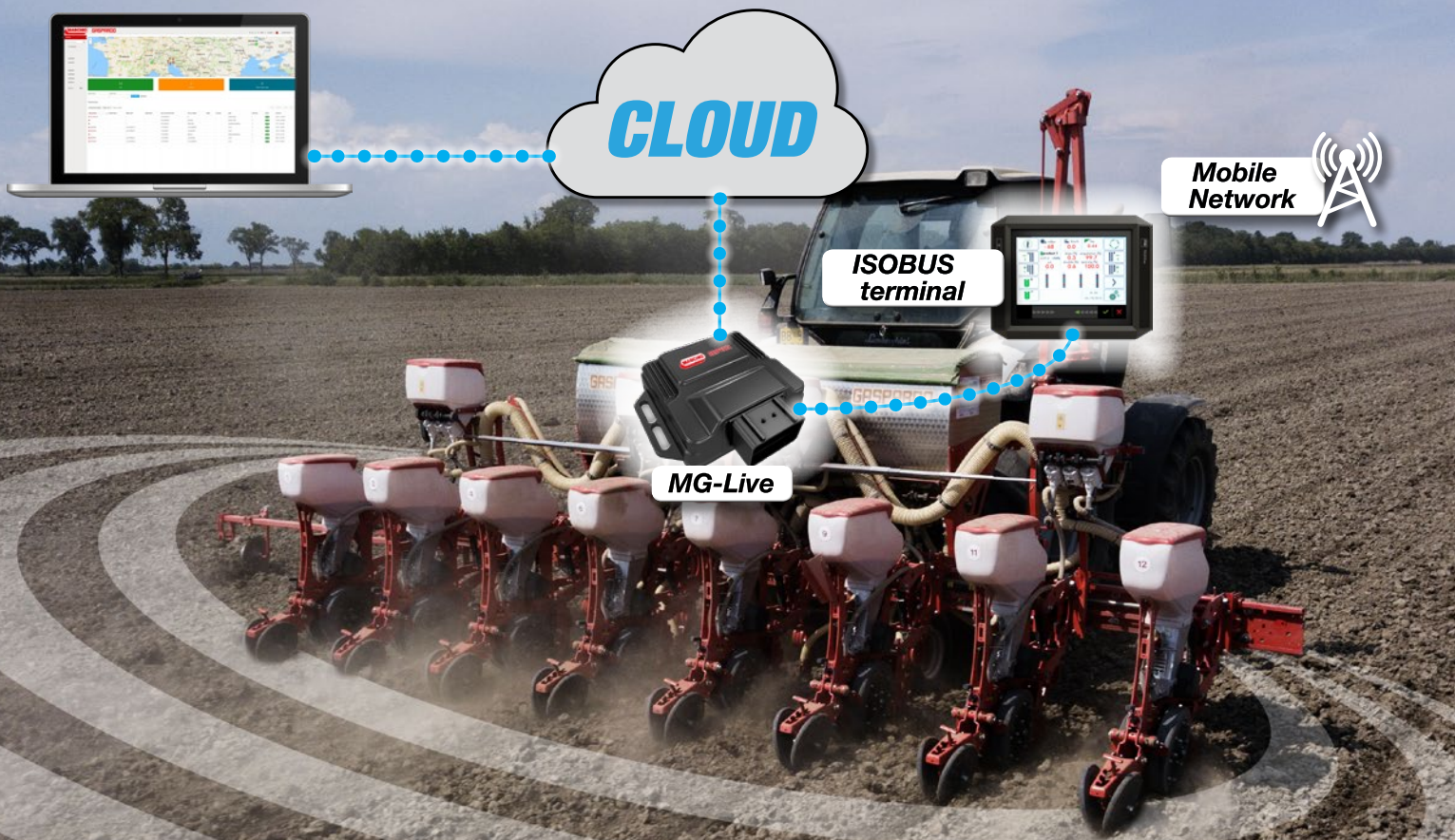
The mechanically adjustable working width version (PASSO) is easy and strong; the so-called "step by step" system allows finding the correct setup rapidly with a pin.

To guarantee the best ploughing performance, MASCHIO GASPARDINO offers 10 different types of mouldboards and 2 skim coulter easily adjustable thanks to the easy fit system.

AGRICULTURE 4.0 WITH MG-LIVE

A strategic vision of your planter!

While Precision Farming provides the tools for optimizing crop yields based on the soil's spatial variability, Agriculture 4.0 is the ultimate epitome of innovation and technology. MG-Live is a system that exploits the mobile network to interconnect GASPARDO planters: with it, farmers can modernize and switch to Agriculture 4.0 to espouse a strategic vision of all their GASPARDO planters and the relevant tasks they perform, ensuring that they are working to their full potential.



NEW
ORIETTA

ISOTRONIC





Growing Together

www.maschio.com



Download our MY MG app

